

# KORAKO

## SPECKLE PARK

Complete Herd Sale

**7TH APRIL 2025, 12PM**

1 • R3 PEDIGREE HERD SIRE

28 VIC PEDIGREE COWS

43 VIC SPECKLE PARK x ANGUS F1 - F3 COWS



[KORAKOSPECKLEPARK.CO.NZ](http://KORAKOSPECKLEPARK.CO.NZ)

# NZ FARMERS LIVESTOCK

*Working with Farmers for Farmers*

## Proudly working with Korako Speckle Park

**At NZ Farmers Livestock, our clients benefit from our history and experience in the market.** We bring extensive experience and knowledge gained through trusted and long-established relationships within the rural community. We add value for you, by supporting you, to market.

And, we understand **Finance**, and how important flexibility and speed of delivery is a necessity when it comes to farming. NZ Farmers Livestock Finance has a facility available for all your finance needs. We pride ourselves on our **fast acceptance and personal support. Our dedicated agents are committed to supporting you.**

**MyLiveStock** will stream, please register 48hrs prior to the sale at [www.mylivestock.co.nz](http://www.mylivestock.co.nz) in order to participate in online bidding.

**For more information, please contact:**

**Bill Sweeney 027 451 5310**  
NZ Farmer Livestock

**Brent Bougen 027 210 4698**  
NZ Farmers Stud Stock

A large, stylized graphic of the word "SOLD!" in a bold, sans-serif font. The letters are yellow with a thick blue outline and a slight 3D effect. The exclamation point is also yellow with a blue outline.

**MyLiveStock**  
Website | Mobile | App



# COMPLETE COW HERD SALE 2025

Korako Speckle Park Stud has been established for over ten years now, however I have decided at this stage of my life it is time to take towards eventual retirement, still farming for a while yet but with less time commitment that a stud can demand.

Starting a Speckle Park Stud 10 years ago was not easy as the breed was relatively new in this country with numbers for sale very limited. Embryos were purchased from Maungahina Stud and later Premier Cattle Company to get started. Some of those foundation herd cows are included in the sale. Top priced sires were also purchased from those leading studs.

AI has also been used to generate some out cross sires for use in the herd and many cows are in calf to those genetics.

In this second stage of the Korako Stud dispersal I am offering the complete cow herd with 28 pure bred cows offered individually. This section of the sale has cows which are bred from cows that were embryos and AI and herd sires which were selected for easy calving traits and good temperament. They range in age from T born 2022 to M born 2016. Transfer certificates are available for studs if required.

The second section of the herd will be sold in pairs, with a pick of one or the two. They are all Speckle Park bred but started from a herd of Pure Bred Angus cows. They range from F1 50% SP X 50% Angus up to F3 which is 7/8 th Speckle Park. All cows which have had bad feet ( curly toes ), temperament issues or are not in calf have been culled.

The herd is C 10 TB free and all herd replacement hfrs going into the herd have been BVD and EBL tested negative and vaccinated with a follow up booster.

All sale cows were weighed on the 14th of February 2025 vetted in calf on the 28th of February 2025 and the calves weaned off the same day.

Mating commenced on the 21st October 2024 and finished on the 11th December 2024, just over 7 weeks RWB which has been my policy for several years now.

All animals for sale are guaranteed for breeding purposes under normal terms and conditions.

I wish you all the best with your bidding.

Regards

*Bill*

# SPECKLE PARK NZ EBV's Explained

BREEDPLAN EBVs remove the effects of non-genetic factors (e.g. feeding regimes, animal age) from what is seen and measured to provide the best measure of an animal's genetic merit. BREEDPLAN information should always be used in conjunction with other selection criteria, including visual assessment.

## A BEST PRACTICE GUIDE TO SELECTING YOUR NEXT SPECKLE PARK SIRE

A BREEDPLAN Guide to Interpreting EBVs helps producers understand how to assess and compare the genetic merit of animals. Each EBV is reported in the units in which the measurements are taken (e.g. Weight EBVs are reported in kilograms). Please note that *only EBVs produced in the same BREEDPLAN analysis can be directly compared.*

When interpreting BREEDPLAN EBVs, producers may:

- 1. Compare to the level of genetic merit within the current population.**  
Comparing against the current levels of genetic merit (*breed average and/or percentile bands*) allows you to understand where an animal ranks within the evaluated population. *EBV percentile graphs* can be found online for each animal and provide a visual representation of where an animal ranks for each trait.
- 2. Compare expected difference in progeny performance.**  
Comparing the expected difference in outcome if two (or more) different sires are used in a herd gives you an understanding of what these EBVs mean in real terms.
- 3. Consider EBV accuracy.**  
As a general rule, animals should be compared on EBVs regardless of accuracy. Most rising two year old bulls will have similar EBV accuracy levels; however, there may be some variation (particularly at multi-vendor sales) due to levels of performance recording and/or progeny if the bull was used as a yearling.

The searchable version of this catalogue can be found online here <https://www.specklepark.org/> or at [www.pivotdesign.co.nz/catalogues](http://www.pivotdesign.co.nz/catalogues).

## SPECKLE PARK BREEDPLAN

Speckle Park International publishes the following BREEDPLAN EBVs.

Growth EBVs	Fertility & Birth EBVs	Carcase EBVs
Birth Weight	Scrotal Size	Carcase Weight
200 Day Growth	Gestation Length	Eye Muscle Area
400 Day Growth		Rib Fat
600 Day Growth		Rump Fat
Milk (Maternal)		Retail Beef Yield
Mature Cow Weight		Intramuscular Fat



More information, including EBV descriptions and how to use them, can be found in the **Using & Understanding BREEDPLAN EBVs** booklet. Scan the QR code for more details

<https://breedplan.une.edu.au/media/dtqpdm34/using-and-understanding-breedplan-ebvs.pdf>

# CONDITIONS OF SALE

1. The sale will be conducted under the usual terms and conditions of the NZ Stock and Station Agents Assn.
2. Each lot becomes the property of the purchaser at the conclusion of the sale.
3. Although every care has been taken in ensuring the accuracy of this catalogue no responsibility is accepted for any errors that may be included therein.
4. Guarantee: All stock are guaranteed structurally sound.
5. All cows are tuberculosis tested in accordance with statutory regulations. TB Status is C10 over all herds
6. G.S.T. All cow sold are G.S.T exclusive
7. All cows in this catalogue have been NAIT tagged.
8. Only cows that have been selected for transfer are eligible for transfer.
9. REBATE: On behalf of the vendor, NZ Farmers Livestock will pay a purchasing rebate of 4% of the purchase price excluding GST, plus GST, to livestock agents with an NZ Farmers Livestock Monthly Account that are also Accredited Agencies on MyLiveStock where the buyer has registered on MyLiveStock under that Accredited Agency.
10. Please register 48hrs prior to the sale at [www.mylivestock.co.nz](http://www.mylivestock.co.nz) in order to participate in online bidding.

# SETTLING YOUR COW IN

I strongly recommend that you have some other cattle in your yards to welcome your new addition, preferably pregnant cows or steers. All my bulls have been running together in their contemporary group since weaning so it can be quite distressing for

them to be left in a yard by themselves after being transported.

I can assure you that my bulls are handled extensively with low stress practices prior to sale.

## March 2025 Speckle Park BREEDPLAN Percentile Band for 2023 born calves

Percentile Band	GL	Bwt	200	400	600	Mwt	Milk	SS	Cwt	EMA	Rib	Rump	RBV	IMF
<b>Top Value</b>	-4.3	-3.5	+44	+66	+94	+113	+16	+2.9	+55	+3.2	+3.6	+5.0	+3.0	+1.9
<b>Top 1%</b>	-2.6	-1.6	+34	+53	+71	+82	+11	+1.5	+43	+2.1	+2.2	+3.0	+1.9	+1.3
<b>Top 5%</b>	-1.7	-0.7	+28	+43	+56	+64	+10	+1.1	+35	+1.7	+1.6	+2.1	+1.3	+0.8
<b>Top 10%</b>	-1.3	-0.2	+25	+38	+50	+55	+9	+0.8	+31	+1.4	+1.2	+1.6	+1.0	+0.6
<b>Top 15%</b>	-1.1	+0.1	+23	+35	+46	+50	+8	+0.7	+28	+1.2	+1.0	+1.3	+0.8	+0.5
<b>Top 20%</b>	-0.9	+0.4	+22	+33	+43	+46	+7	+0.6	+26	+1.1	+0.8	+1.1	+0.6	+0.4
<b>Top 25%</b>	-0.7	+0.6	+21	+31	+41	+43	+7	+0.5	+25	+1.0	+0.7	+0.9	+0.5	+0.3
<b>Top 30%</b>	-0.6	+0.8	+19	+29	+38	+40	+6	+0.4	+23	+0.9	+0.6	+0.7	+0.4	+0.2
<b>Top 35%</b>	-0.5	+1.0	+18	+28	+36	+37	+6	+0.3	+22	+0.8	+0.4	+0.5	+0.3	+0.2
<b>Top 40%</b>	-0.3	+1.2	+17	+26	+34	+35	+6	+0.3	+21	+0.7	+0.3	+0.4	+0.2	+0.1
<b>Top 45%</b>	-0.2	+1.4	+16	+25	+32	+33	+5	+0.2	+20	+0.6	+0.2	+0.2	+0.1	+0.1
<b>Top 50%</b>	-0.1	+1.6	+15	+24	+31	+31	+5	+0.1	+19	+0.5	+0.1	+0.1	+0.0	+0.0
<b>Top 55%</b>	+0.0	+1.8	+14	+22	+29	+28	+5	+0.1	+18	+0.4	+0.0	+0.0	-0.1	+0.0
<b>Top 60%</b>	+0.2	+2.0	+13	+21	+27	+26	+4	+0.0	+17	+0.3	-0.1	-0.2	-0.2	-0.1
<b>Top 65%</b>	+0.3	+2.2	+13	+19	+25	+24	+4	-0.1	+15	+0.2	-0.2	-0.3	-0.3	-0.1
<b>Top 70%</b>	+0.5	+2.4	+12	+18	+23	+22	+4	-0.1	+14	+0.1	-0.3	-0.5	-0.5	-0.2
<b>Top 75%</b>	+0.6	+2.6	+11	+16	+21	+19	+3	-0.2	+12	+0.0	-0.4	-0.6	-0.6	-0.2
<b>Top 80%</b>	+0.8	+2.9	+9	+15	+19	+17	+3	-0.3	+11	-0.1	-0.5	-0.8	-0.7	-0.3
<b>Top 85%</b>	+1.0	+3.2	+8	+12	+16	+14	+2	-0.4	+9	-0.2	-0.7	-1.0	-0.9	-0.4
<b>Top 90%</b>	+1.2	+3.5	+7	+10	+13	+10	+1	-0.5	+7	-0.4	-0.9	-1.3	-1.1	-0.4
<b>Top 95%</b>	+1.5	+4.1	+4	+6	+8	+4	+0	-0.7	+4	-0.7	-1.2	-1.7	-1.5	-0.6
<b>Top 99%</b>	+2.3	+5.4	+0	-1	-1	-8	-2	-1.1	-3	-1.3	-1.7	-2.5	-2.0	-0.9
<b>Low Value</b>	+3.6	+9.0	-7	-12	-18	-24	-7	-2.1	-12	-1.9	-2.8	-3.8	-3.5	-1.6

# WHAT IS A SPECKLE PARK?

Speckle Park are a carcass orientated, yet maternal, pure breed of beef cattle. They originate from Canada and are Polled and British Bred. Speckle Parks are moderate sized and mature cows weigh between 600 to 850kgs and mature bulls over 1000kgs. The calves average 30 to 40kgs at birth and wean at around 230 to over 370kgs.

The breed reach puberty early and females cycle early and breed easily, the cows are also very maternal with good udders. The bulls sexually mature at about 12 months and make good yearling breeders. Speckle Park rarely experience difficulty birthing as the small front shoulders of the newborn calf make for easy calving. The calves are very vigorous at birth and most newborns are up and suckling in minutes.

Speckle Parks are very docile animals and their gentle disposition makes them a pleasure to work with.

Commercial breeders are increasingly finding Speckle bulls a wise choice for breeding heifers, due to the ease of calving and the increased quality of the carcass. The breed has high marbling, yet a perfect fat covering, with consistently high-quality and tender meat. Speckle Park also have the unique ability of achieving a AAA grade carcass without the excess outer fat cover.

# GENETIC PROFILE

## MYOSTATIN

N	Non-Carrier	DNA analysis is consistent with the subject NOT carrying the mutation tested
C	Carrier	DNA analysis is consistent with the subject CARRYING the mutation tested
A	Affected	DNA analysis is consistent with the subject carrying two copies of the mutation tested
NR	No Result	

## COAT

ED	Homozygous Dominant Black
ED/e	Dominant Black/Recessive Red
ED/E+	Dominant Black/Wildtype
E+/e	Wildtype/Recessive Red
E+/E+	Homzygous Wildtype
e/e	Homozygous Recessive Red

## HORN/POLL

PcPc	Homozygous Poll (PP)	Predominately Polled (occasional scurs)
PcPf		
PfPf		
Hpc	Heterozygous Poll (PH)	Polled or Scurred
HPf		
HH	Horned (HH)	Horned
NR	due failed test OR due to unresolved haplotype (combination of HornPoll markers fail to produce a valid result)	

## SPECKLE PARK NZ BREED AVERAGE FOR 2023 BORN CALVES

GL	BWT	200	400	600	MCW	MILK	SS	CWT	EMA	RIB	P8	RBV	IMF
-0.1	+1.6	+16	+24	+31	+32	+5	+0.2	+19	+0.5	+0.2	+0.2	+0.0	+0.1

REF

**PREMIER G2 CHEROKEE N42**

POLLED

Born: 23/09/2017 • ID: PMR N42 • Tag No: N42

RIVER HILL TRAFFIC JAM 26T (P)  
(Speckled)

A &amp; W JOEY 55P (Speckled)

CALAMASUE 26R (P) (Speckled)

**SIRE: SPKNZ GRAND SLAM (AI) (ET) (P) (Leopard)**

UPTO SPECS TEEKA 8T (P) (Leopard)

RAVEN MEADOWS MAGNUM 10N (Speckled)

PRAIRIE HILL REBA 154F (Speckled)

SPKNZ FALCON (AI) (ET) (P)  
(Speckled)

A &amp; W 15R (P) (Leopard)

CODIAK TERESSA GNK 12T (P) (Speckled)

**DAM: PREMIER F20 CINDER L7 (AI) (ET) (Speckled)**

SPN HI (AI) (ET) (P) (White)

SPKNZ EXTREME E27 (ET) (P) (White)

SPKNZ E47 (ET) (P) (White)

**MARCH 2025 SPECKLE PARK SINGLE-STEP BREEDPLAN**

GL	BW	Milk	200	400	600	MCW
<b>+1.1</b>	<b>+1.4</b>	<b>+8</b>	<b>+9</b>	<b>+20</b>	<b>+23</b>	<b>+15</b>
59%	84%	62%	83%	80%	78%	63%
SS	CWT	EMA	Rib	Rump	RBV	IMF
<b>+0.9</b>	<b>+16</b>	<b>+0.9</b>	<b>-0.8</b>	<b>-1.3</b>	<b>+0.8</b>	<b>+0.2</b>
65%	68%	50%	64%	63%	60%	57%

<b>GENETIC PROFILE</b>	Leptin	
	Poll / Horn	<b>PcPc</b>
	Coat	<b>ED/ED</b>
	Myostatin	<b>Carrier</b>

**COMMENTS:** A bull that was rated very highly by his breeder. He has 2 low birthweight sires in his breeding with Grand Slam and Falcon. Still very sound at six years and has excellent temperament.



REF

**KORAKO PAL**

POLLED

Born: 01/08/2018 • ID: KOR P197 • Tag No: P197

SPKNZ FALCON (AI) (ET) (P)  
(Speckled)A & W 15R (P) (Leopard)  
CODIAK TERESSA GNK 12T (P) (Speckled)**SIRE: MAUNGAHINA KIDMANS COVE (P) (Leopard)**

MAINSTREAM E12 (ET) (P) (Speckled)

HWY. 4 SPECKLE PARK 2H (Speckled)  
NOTTA PHO-FINISH 54P (Speckled)MAINSTREAM ELDORADO E11 (ET)  
(P) (White)HWY. 4 SPECKLE PARK 2H (Speckled)  
SPOTS 'N SPROUTS 3K (Speckled)**DAM: KORAKO MINNIE (AI) (ET) (P) (White)**

MAUNGAHINA J36 (P) (Speckled)

SPKNZ EXTREME E27 (ET) (P) (White)  
SPKNZ E42 (ET) (P) (Speckled)**MARCH 2025 SPECKLE PARK SINGLE-STEP BREEDPLAN**

GL	BW	Milk	200	400	600	MCW
<b>+0.0</b>	<b>+1.3</b>	<b>+8</b>	<b>+16</b>	<b>+24</b>	<b>+35</b>	<b>+34</b>
56%	73%	55%	70%	68%	67%	57%

SS	CWT	EMA	Rib	Rump	RBV	IMF
<b>+0.4</b>	<b>+21</b>	<b>+0.4</b>	<b>+1.1</b>	<b>+1.4</b>	<b>-1.2</b>	<b>+1.4</b>
59%	59%	50%	60%	60%	57%	55%

**GENETIC PROFILE**

Leptin	
Poll / Horn	<b>PcPc</b>
Coat	<b>ED/e</b>
Myostatin	<b>Non Carrier (Free)</b>

**COMMENTS:** Pal is an AI home bred sire by Kidman Cove who needs no introduction. His dam is by Eldorado E11 a Maungahina embryo cow. Korako Minnie M3 always has stand out calves and I have retained another bull calf out of her which is a cracker and used last season.

REF

**MAUNGAHINA R234**

POLLED

Born: 07/08/2020 • ID: MAU R234 • Tag No: R234

REDNECK JSF WHISKEY 4B  
(Speckled)REDNECK FERDINAND 14Y (Speckled)  
REDNECK WHISKEY 7W (P) (White)**SIRE: MINNAMURRA MONTEZUMA M25 (AI) (P) (Leopard)**MINNAMURRA 60W NICE LADY G8  
(AI) (ET) (P) (White)RIVER HILL 26T WALKER 60W (P) (Speckled)  
CODIAK NICE LADY RKW 25N (Leopard)CODIAK PUTNAM GNK 61Y (P)  
(Leopard)CODIAK OSCAR GNK 8S (P) (Leopard)  
NORTHERN LIGHTS 14N (White)**DAM: MAUNGAHINA MAU N240 (AI) (ET) (P) (Speckled)**CODIAK AMANDA GNK 42Y (P)  
(Speckled)CODIAK CRIKEY GNK 13U (P) (Speckled)  
CODIAK UNIQUE GNK 8R (P) (Speckled)**MARCH 2025 SPECKLE PARK SINGLE-STEP BREEDPLAN**

GL	BW	Milk	200	400	600	MCW
<b>-1.7</b>	<b>+0.8</b>	<b>+4</b>	<b>+14</b>	<b>+27</b>	<b>+34</b>	<b>+30</b>
65%	82%	55%	78%	76%	73%	60%

SS	CWT	EMA	Rib	Rump	RBY	IMF
<b>-0.3</b>	<b>+16</b>	<b>-0.5</b>	<b>+1.3</b>	<b>+1.8</b>	<b>-1.7</b>	<b>+0.7</b>
67%	64%	52%	62%	61%	59%	58%

GENETIC PROFILE	Leptin	<b>C/C</b>
	Poll / Horn	<b>PcPc</b>
	Coat	<b>ED/ED</b>
	Myostatin	<b>Non Carrier (Free)</b>

**COMMENTS:** I brought Ridge as an out cross sire. He has proven to reliably produce low birthweight progeny. He has great structure and good temperament. He will be used again by me this season.

REF

**KORAKO SULTAN**

POLLED

Born: 07/08/2021 • ID: KOR S101 • Tag No: S101



P.A.R. CASANOVA 55C (P) (Speckled)

PAR ACE IN A HOLE 66A (Speckled)

POPPY OF P.A.R. 55P (Leopard)

**SIRE: MX EL GUAPO 103E (P) (Speckled)**P.A.R. HIGH MAINTENANCE OF MX  
103Z (P) (Speckled)

P.A.R. THROTTLE 66T (P) (Speckled)

SPECIAL DESIGN OF P.A.R. 20S (P) (Speckled)

MAUNGAHINA LORD STARS (White)

SPKNZ GRAND SLAM (AI) (ET) (P) (Leopard)

MAINSTREAM E12 (ET) (P) (Speckled)

**DAM: KORAKO PREMIER (AI) (ET) (P) (White)**

SPKNZ SPN H36 (ET) (P) (Speckled)

SPKNZ EXTREME E27 (ET) (P) (White)

SPKNZ E42 (ET) (P) (Speckled)

**MARCH 2025 SPECKLE PARK SINGLE-STEP BREEDPLAN**

GL	BW	Milk	200	400	600	MCW
<b>+1.0</b>	<b>+3.8</b>	<b>+6</b>	<b>+24</b>	<b>+35</b>	<b>+51</b>	<b>+55</b>
58%	74%	39%	72%	70%	70%	57%

SS	CWT	EMA	Rib	Rump	RBY	IMF
<b>+0.2</b>	<b>+28</b>	<b>+1.4</b>	<b>+0.4</b>	<b>+0.4</b>	<b>+0.1</b>	<b>+0.3</b>
71%	58%	46%	55%	55%	52%	45%

**GENETIC PROFILE**

Leptin	<b>C/T</b>
Poll / Horn	<b>PcPc</b>
Coat	<b>ED/ED</b>
Myostatin	<b>Non Carrier (Free)</b>

**COMMENTS:** An outstanding deep bodied bull . Out cross with EL Guapo and Lord Stars on the dams side . Unfortunately limited use this season due to injury.

REF

**KORAKO SAMSON**

POLLED

Born: 06/08/2021 • ID: KOR S121 • Tag No: S121



P.A.R. CASANOVA 55C (P) (Speckled)

PAR ACE IN A HOLE 66A (Speckled)  
POPPY OF P.A.R. 55P (Leopard)**SIRE: MX EL GUAPO 103E (P) (Speckled)**P.A.R. HIGH MAINTENANCE OF MX  
103Z (P) (Speckled)P.A.R. THROTTLE 66T (P) (Speckled)  
SPECIAL DESIGN OF P.A.R. 20S (P) (Speckled)MAUNGAHINA KIDMANS COVE (P)  
(Leopard)SPKNZ FALCON (AI) (ET) (P) (Speckled)  
MAINSTREAM E12 (ET) (P) (Speckled)**DAM: KORAKO PEGGY (AI) (ET) (P)**MAUNGAHINA H62 (AI) (ET) (P)  
(White)SPOTS 'N SPROUTS STANDS ALONE (P) (White)  
NORTHERN LIGHTS 14N (White)**MARCH 2025 SPECKLE PARK SINGLE-STEP BREEDPLAN**

GL	BW	Milk	200	400	600	MCW
<b>+1.1</b>	<b>+2.9</b>	<b>+6</b>	<b>+20</b>	<b>+31</b>	<b>+49</b>	<b>+56</b>
60%	77%	41%	74%	71%	71%	58%

SS	CWT	EMA	Rib	Rump	RBY	IMF
<b>-0.1</b>	<b>+28</b>	<b>+0.7</b>	<b>-0.2</b>	<b>-0.4</b>	<b>+0.0</b>	<b>+0.4</b>
72%	59%	48%	56%	56%	53%	47%

<b>GENETIC PROFILE</b>	Leptin	<b>C/T</b>
	Poll / Horn	<b>PcPc</b>
	Coat	<b>ED/ED</b>
	Myostatin	<b>Non Carrier (Free)</b>

**COMMENTS:** Look at Samson's lovely top line. A very nice balanced bull with a low birth weight but very good growth figures as well. His dam is a very well bred ET cow by Kidmans Cove a very popular AI sire. His 0.7+ IMF put him in the top 5-10% for breed bracket.

REF

**KORAKO SAUL**

POLLED

Born: 29/07/2021 • ID: KOR S133 • Tag No: S133



P.A.R. CASANOVA 55C (P) (Speckled)

PAR ACE IN A HOLE 66A (Speckled)  
POPPY OF P.A.R. 55P (Leopard)**SIRE: MX EL GUAPO 103E (P) (Speckled)**P.A.R. HIGH MAINTENANCE OF MX  
103Z (P) (Speckled)P.A.R. THROTTLE 66T (P) (Speckled)  
SPECIAL DESIGN OF P.A.R. 20S (P) (Speckled)MAUNGAHINA LEGACY (AI) (ET)  
(Leopard)SPOTS 'N SPROUTS STANDS ALONE (P) (White)  
SPKNZ SPN H20 (ET) (P) (Speckled)**DAM: KORAKO PETALS (AI) (ET) (P) (White)**

MAINSTREAM E12 (ET) (P) (Speckled)

HWY. 4 SPECKLE PARK 2H (Speckled)  
NOTTA PHO-FINISH 54P (Speckled)**MARCH 2025 SPECKLE PARK SINGLE-STEP  
BREEDPLAN**

GL	BW	Milk	200	400	600	MCW
<b>-0.4</b>	<b>+1.4</b>	<b>+5</b>	<b>+15</b>	<b>+25</b>	<b>+34</b>	<b>+40</b>
60%	75%	43%	73%	71%	71%	58%
SS	CWT	EMA	Rib	Rump	RBV	IMF
<b>+0.1</b>	<b>+20</b>	<b>-0.2</b>	<b>-0.3</b>	<b>-0.5</b>	<b>-0.1</b>	<b>+0.1</b>
72%	60%	49%	58%	58%	55%	49%

**GENETIC PROFILE**

Leptin	<b>C/C</b>
Poll / Horn	<b>PcPc</b>
Coat	<b>ED/ED</b>
Myostatin	<b>Non Carrier (Free)</b>

**COMMENTS:** Saul gets in the top 30% with his low birth weight of 33.4 kgs. He also gets in the top half for growth cwt and his IMF is in the top third for BREEDPLAN Speckle Park bulls. A versatile bull for any herd.

REF

**KORAKO TITAN**

POLLED

Born: 20/08/2022 • ID: KOR T53 • Tag No: T53



MINNAMURRA MONTEZUMA M25  
(AI) (P) (Leopard)

**SIRE: MAUNGAHINA R234 (AI) (P) (Leopard)**

MAUNGAHINA MAU N240 (AI) (ET)  
(P) (Speckled)

PREMIER G2 CHEROKEE N42 (AI)  
(ET) (P) (Speckled)

**DAM: KORAKO QUINCE Q36 (P) (White)**

KORAKO MAGGIE (AI) (ET) (P)  
(White)

REDNECK JSF WHISKEY 4B (Speckled)

MINNAMURRA 60W NICE LADY G8 (AI) (ET) (P) (White)

CODIAK PUTNAM GNK 61Y (P) (Leopard)

CODIAK AMANDA GNK 42Y (P) (Speckled)

SPKNZ GRAND SLAM (AI) (ET) (P) (Leopard)

PREMIER F20 CINDER L7 (AI) (ET) (Speckled)

SPOTS 'N SPROUTS STANDS ALONE (P) (White)

MAUNGAHINA J37 (P) (Speckled)

**MARCH 2025 SPECKLE PARK SINGLE-STEP BREEDPLAN**

GL	BW	Milk	200	400	600	MCW
<b>-0.8</b>	<b>+1.2</b>	<b>+7</b>	<b>+14</b>	<b>+23</b>	<b>+30</b>	<b>+24</b>
47%	69%	42%	67%	65%	60%	46%

SS	CWT	EMA	Rib	Rump	RBY	IMF
<b>+0.5</b>	<b>+16</b>	<b>+0.3</b>	<b>+0.2</b>	<b>+0.2</b>	<b>-0.3</b>	<b>+0.2</b>
51%	51%	37%	47%	46%	41%	42%

GENETIC PROFILE	Leptin	C/C
	Poll / Horn	<b>Homozygous Polled (PcPc)</b>
	Coat	<b>Homozygous Dominant Black</b>
	Myostatin	<b>Non Carrier (Free)</b>

**COMMENTS:** Retained as a sire for easy calve and proven for that trait , used on hfrs with no issues at all.

REF

**KORAKO TRU**

POLLED

Born: 22/08/2022 • ID: KOR T107 • Tag No: T107



SPKNZ GRAND SLAM (AI) (ET) (P)  
(Leopard)

RIVER HILL TRAFFIC JAM 26T (P) (Speckled)  
UPTO SPECS TEEKA 8T (P) (Leopard)

**SIRE: PREMIER G2 CHEROKEE N42 (AI) (ET) (P) (Speckled)**

PREMIER F20 CINDER L7 (AI) (ET)  
(Speckled)

SPKNZ FALCON (AI) (ET) (P) (Speckled)  
SPN HI (AI) (ET) (P) (White)

MAINSTREAM ELDORADO E11 (ET)  
(P) (White)

HWY. 4 SPECKLE PARK 2H (Speckled)  
SPOTS 'N SPROUTS 3K (Speckled)

**DAM: KORAKO MINNIE (AI) (ET) (P) (White)**

MAUNGAHINA J36 (P) (Speckled)

SPKNZ EXTREME E27 (ET) (P) (White)  
SPKNZ E42 (ET) (P) (Speckled)

**MARCH 2025 SPECKLE PARK SINGLE-STEP BREEDPLAN**

GL	BW	Milk	200	400	600	MCW
<b>-1.3</b>	<b>+0.0</b>	<b>+9</b>	<b>+13</b>	<b>+23</b>	<b>+26</b>	<b>+20</b>
48%	73%	50%	69%	67%	64%	50%

SS	CWT	EMA	Rib	Rump	RBY	IMF
<b>+0.5</b>	<b>+21</b>	<b>+0.9</b>	<b>+0.2</b>	<b>+0.1</b>	<b>+0.0</b>	<b>+0.7</b>
53%	55%	40%	51%	50%	46%	46%

GENETIC PROFILE	Leptin	C/C
	Poll / Horn	<b>Homozygous Polled (PcPc)</b>
	Coat	<b>Homozygous Dominant Black</b>
	Myostatin	<b>Non Carrier (Free)</b>

**COMMENTS:** Tru is a deep bodied bull with great temperament just like his sire. Used over yearling hfrs with no calving issues at all. Out of Minnie ( M3 ) who leaves out standing calves. Tru is included in the sale.

LOT 1

# KORAKO TABITHA

POLLED

Born: 03/08/2022 • ID: KOR T1 • Tag No: T1



MINNAMURRA MONTEZUMA M25  
(AI) (P) (Leopard)

REDNECK JSF WHISKEY 4B (Speckled)  
MINNAMURRA 60W NICE LADY G8 (AI) (ET) (P) (White)

**SIRE: MAUNGAHINA R234 (AI) (P) (Leopard)**  
MAUNGAHINA MAU N240 (AI) (ET)  
(P) (Speckled)

CODIAK PUTNAM GNK 61Y (P) (Leopard)  
CODIAK AMANDA GNK 42Y (P) (Speckled)

PREMIER G2 CHEROKEE N42 (AI)  
(ET) (P) (Speckled)

SPKNZ GRAND SLAM (AI) (ET) (P) (Leopard)  
PREMIER F20 CINDER L7 (AI) (ET) (Speckled)

**DAM: KORAKO QUETA Q34 (P) (White)**  
KORAKO NOLA (AI) (ET) (P)  
(Leopard)

SPKNZ EXTREME E27 (ET) (P) (White)  
MAUNGAHINA H61 (AI) (ET) (P) (White)

**MARCH 2025 SPECKLE PARK SINGLE-STEP BREEDPLAN**

GL	BW	Milk	200	400	600	MCW
-0.6	+2.5	+5	+23	+37	+45	+41
47	68	43	66	65	60	46

SS	CWT	EMA	Rib	Rump	RBV	IMF
+0.3	+24	+0.0	+0.2	+0.2	-0.6	+0.3
51	51	36	47	45	41	42

<b>GENETIC PROFILE</b>	Leptin	C/T
	Poll / Horn	Homozygous Polled (PcPc)
	Coat	Homozygous Dominant Black (ED/ED)
	Myostatin	Carrier

**COMMENTS:** Very nice young, almost show cow to start the sale. She is in the top 23% for IMF and in calf to Saul who has it all with great breedplan figures. Weight: 544kgs RWB: KOR S133

Purchaser ..... Price .....



LOT 2

# KORAKO TYLA

POLLED

Born: 01/09/2022 • ID: KOR T89 • Tag No: T89



SPKNZ EDUARDO E31 (ET) (P)  
(Speckled)

RIVER HILL TRAFFIC JAM 26T (P) (Speckled)  
PRAIRIE HILL 65M (Speckled)

**SIRE: KORAKO PRINCE (AI) (ET) (P) (Speckled)**

SPKNZ E34 (ET) (P) (White)

PRAIRIE HILL JOHN WAYNE 50S (P) (Speckled)  
CODIAK NICE LADY RKW 25N (Leopard)

MAUNGAHINA LEGACY (AI) (ET)  
(Leopard)

SPOTS 'N SPROUTS STANDS ALONE (P) (White)  
SPKNZ SPN H20 (ET) (P) (Speckled)

**DAM: KORAKO PHYLIS (AI) (ET) (P) (Leopard)**

MAINSTREAM E04 (ET) (P)  
(Speckled)

HWY. 4 SPECKLE PARK 2H (Speckled)  
NOTTA PHO-FINISH 54P (Speckled)

**MARCH 2025 SPECKLE PARK SINGLE-STEP BREEDPLAN**

GL	BW	Milk	200	400	600	MCW
-0.3	+2.5	+6	+23	+35	+41	+42
48	72	49	69	67	64	51

SS	CWT	EMA	Rib	Rump	RBV	IMF
+1.1	+25	+0.4	+0.1	+0.1	-0.1	+0.3
57	55	42	52	51	47	46

GENETIC PROFILE	Leptin	C/T
	Poll / Horn	Homozygous Polled (PcPc)
	Coat	Homozygous Dominant Black (ED/ED)
	Myostatin	Non Carrier (Free)

**COMMENTS:** Look at Tyla's depth of body, a great future brood stud cow. She is in the high 30% bracket for most of the EBV weigh figures. In calf to Saul. Bull or heifer, you will get a valuable calf.. Weight: 564kgs RWB: KOR S133

Purchaser ..... Price .....

LOT 3

# KORAKO TAMA

POLLED

Born: 19/08/2022 • ID: KOR T44 • Tag No: T44



SPKNZ GRAND SLAM (AI) (ET) (P)  
(Leopard)

RIVER HILL TRAFFIC JAM 26T (P) (Speckled)  
UPTO SPECS TEEKA 8T (P) (Leopard)

**SIRE: PREMIER G2 CHEROKEE N42 (AI) (ET) (P) (Speckled)**

PREMIER F20 CINDER L7 (AI) (ET)  
(Speckled)

SPKNZ FALCON (AI) (ET) (P) (Speckled)  
SPN H1 (AI) (ET) (P) (White)

SPOTS 'N SPROUTS STANDS ALONE  
(P) (White)

STYALS LIGHTNING LADD 14P (P) (Speckled)  
SPOTS 'N SPROUTS 2R (P) (Speckled)

**DAM: KORAKO MOTTLES (AI) (ET) (P) (Speckled)**

MAUNGAHINA J37 (P) (Speckled)

MAINSTREAM ELDORADO E11 (ET) (P) (White)  
SPKNZ E36 (ET) (P) (Speckled)

**MARCH 2025 SPECKLE PARK SINGLE-STEP BREEDPLAN**

GL	BW	Milk	200	400	600	MCW
<b>+0.7</b>	<b>+1.5</b>	<b>+8</b>	<b>+10</b>	<b>+18</b>	<b>+22</b>	<b>+15</b>
47	73	49	69	67	63	50

SS	CWT	EMA	Rib	Rump	RBV	IMF
<b>+0.1</b>	<b>+12</b>	<b>+0.3</b>	<b>-0.3</b>	<b>-0.5</b>	<b>+0.1</b>	<b>+0.2</b>
53	54	40	50	49	45	45

GENETIC PROFILE	Leptin	C/T
	Poll / Horn	<b>Homozygous Polled (PcPc)</b>
	Coat	<b>Homozygous Dominant Black (ED/ED)</b>
	Myostatin	<b>Non Carrier (Free)</b>

**COMMENTS:** Nice udder and feet for Tama. Should last in your herd for years. Has a good BW EBV of 1.5 and VIC to Saul, outcross son of MX EL GUAPO. Weight: 494kgs RWB: KOR S133

Purchaser ..... Price .....

LOT 4

# KORAKO TORI

POLLED

Born: 13/08/2022 • ID: KOR T27 • Tag No: T27



SPKNZ GRAND SLAM (AI) (ET) (P)  
(Leopard)

RIVER HILL TRAFFIC JAM 26T (P) (Speckled)  
UPTO SPECS TEEKA 8T (P) (Leopard)

**SIRE: PREMIER G2 CHEROKEE N42 (AI) (ET) (P) (Speckled)**

PREMIER F20 CINDER L7 (AI) (ET)  
(Speckled)

SPKNZ FALCON (AI) (ET) (P) (Speckled)  
SPN H1 (AI) (ET) (P) (White)

SPKNZ EDUARDO E31 (ET) (P)  
(Speckled)

RIVER HILL TRAFFIC JAM 26T (P) (Speckled)  
PRAIRIE HILL 65M (Speckled)

**DAM: KORAKO PANDORA (AI) (ET) (P) (Speckled)**

SPKNZ H2 (P) (White)

MAINSTREAM ELDORADO E11 (ET) (P) (White)  
SPKNZ E36 (ET) (P) (Speckled)

**MARCH 2025 SPECKLE PARK SINGLE-STEP BREEDPLAN**

GL	BW	Milk	200	400	600	MCW
-0.2	+1.5	+8	+14	+27	+35	+31
47	73	49	69	67	63	50

SS	CWT	EMA	Rib	Rump	RBV	IMF
+0.8	+23	+1.2	-0.2	-0.5	+0.4	+0.4
53	54	39	50	49	45	45

GENETIC PROFILE	Leptin	C/T
	Poll / Horn	Heterozygous Polled (HPc)
	Coat	Homozygous Dominant Black (ED/ED)
	Myostatin	Carrier

**COMMENTS:** Tori is by the great sire PREMIER CHEROKEE whose temperament was perfect with easy calving traits. RWB S121 until 1 Nov then RWB T107 due to S121 injury.. Weight: 488kgs RWB: KOR S121 Then T107

Purchaser ..... Price .....

LOT 5

# KORAKO TERRI

POLLED

Born: 28/08/2022 • ID: KOR T88 • Tag No: T88



SPKNZ EDUARDO E31 (ET) (P)  
(Speckled)

RIVER HILL TRAFFIC JAM 26T (P) (Speckled)  
PRAIRIE HILL 65M (Speckled)

**SIRE: KORAKO PRINCE (AI) (ET) (P) (Speckled)**

SPKNZ E34 (ET) (P) (White)

PRAIRIE HILL JOHN WAYNE 50S (P) (Speckled)  
CODIAK NICE LADY RKW 25N (Leopard)

MAUNGAHINA LORD STARS (White)

SPKNZ GRAND SLAM (AI) (ET) (P) (Leopard)  
MAINSTREAM E12 (ET) (P) (Speckled)

**DAM: KORAKO PEA (AI) (ET) (P) (White)**

SPKNZ SPN H36 (ET) (P) (Speckled)

SPKNZ EXTREME E27 (ET) (P) (White)  
SPKNZ E42 (ET) (P) (Speckled)

**MARCH 2025 SPECKLE PARK SINGLE-STEP BREEDPLAN**

GL	BW	Milk	200	400	600	MCW
<b>-0.2</b>	<b>+1.2</b>	<b>+7</b>	<b>+13</b>	<b>+19</b>	<b>+24</b>	<b>+18</b>
46	72	46	69	67	63	49

SS	CWT	EMA	Rib	Rump	RBV	IMF
<b>+0.9</b>	<b>+14</b>	<b>+0.5</b>	<b>+0.5</b>	<b>+0.6</b>	<b>-0.5</b>	<b>+0.6</b>
47	54	36	45	44	41	40

GENETIC PROFILE	Leptin	T/T
	Poll / Horn	<b>Homozygous Polled (PcPc)</b>
	Coat	<b>Homozygous Dominant Black (ED/ED)</b>
	Myostatin	<b>Non Carrier (Free)</b>

**COMMENTS:** Don't be put off by the black. A very nice pure bred Speckle Park whose dam was by MAU LORD STARS. Not many in this offering with this breeding. Terri is in the top 10% for IMF as a bonus. Weight: 508kgs RWB: KOR S133

Purchaser ..... Price .....

LOT 6

# KORAKO SANDY

POLLED

Born: 07/08/2021 • ID: KOR S19 • Tag No: S19



SPKNZ GRAND SLAM (AI) (ET) (P)  
(Leopard)

RIVER HILL TRAFFIC JAM 26T (P) (Speckled)  
UPTO SPECS TEEKA 8T (P) (Leopard)

**SIRE: PREMIER G2 CHEROKEE N42 (AI) (ET) (P) (Speckled)**

PREMIER F20 CINDER L7 (AI) (ET)  
(Speckled)

SPKNZ FALCON (AI) (ET) (P) (Speckled)  
SPN H1 (AI) (ET) (P) (White)

SPKNZ EXTREME E27 (ET) (P)  
(White)

PRAIRIE HILL JOHN WAYNE 50S (P) (Speckled)  
CODIAK NICE LADY RKW 25N (Leopard)

**DAM: KORAKO NINA (AI) (ET) (P) (White)**

MAUNGAHINA H61 (AI) (ET) (P)  
(White)

SPOTS 'N SPROUTS STANDS ALONE (P) (White)  
NORTHERN LIGHTS 14N (White)

**MARCH 2025 SPECKLE PARK SINGLE-STEP BREEDPLAN**

GL	BW	Milk	200	400	600	MCW
<b>+0.2</b>	<b>+2.4</b>	<b>+6</b>	<b>+20</b>	<b>+32</b>	<b>+43</b>	<b>+37</b>
48	73	50	69	68	68	56

SS	CWT	EMA	Rib	Rump	RYB	IMF
<b>+0.5</b>	<b>+28</b>	<b>+0.8</b>	<b>-2.3</b>	<b>-3.3</b>	<b>+1.9</b>	<b>-0.2</b>
53	57	43	60	60	55	52

<b>GENETIC PROFILE</b>	Leptin	<b>C/T</b>
	Poll / Horn	<b>PcPc</b>
	Coat	<b>ED/ED</b>
	Myostatin	<b>Non Carrier (Free)</b>

**COMMENTS:** Nice depth of body and overall great type of young cow. Sandy is a very typical PREMIER CHEROKEE and is in the top 1% retail beef yield. In calf to Saul so the calf will be a great asset to any herd. Weight: 568kgs RWB: KOR S133

Purchaser ..... Price .....

LOT 7

# KORAKO STELLAR

POLLED

Born: 25/08/2021 • ID: KOR S68 • Tag No: S68



SPKNZ GRAND SLAM (AI) (ET) (P)  
(Leopard)

RIVER HILL TRAFFIC JAM 26T (P) (Speckled)  
UPTO SPECS TEEKA 8T (P) (Leopard)

**SIRE: PREMIER G2 CHEROKEE N42 (AI) (ET) (P) (Speckled)**

PREMIER F20 CINDER L7 (AI) (ET)  
(Speckled)

SPKNZ FALCON (AI) (ET) (P) (Speckled)  
SPN H1 (AI) (ET) (P) (White)

SPKNZ EXTREME E27 (ET) (P)  
(White)

PRAIRIE HILL JOHN WAYNE 50S (P) (Speckled)  
CODIAK NICE LADY RKW 25N (Leopard)

**DAM: KORAKO NADINE (AI) (ET) (P) (Leopard)**

MAUNGAHINA H61 (AI) (ET) (P)  
(White)

SPOTS 'N SPROUTS STANDS ALONE (P) (White)  
NORTHERN LIGHTS 14N (White)

**MARCH 2025 SPECKLE PARK SINGLE-STEP BREEDPLAN**

GL	BW	Milk	200	400	600	MCW
<b>+0.4</b>	<b>+1.6</b>	<b>+6</b>	<b>+11</b>	<b>+19</b>	<b>+25</b>	<b>+23</b>
48	75	50	70	68	69	56

SS	CWT	EMA	Rib	Rump	RBV	IMF
<b>+0.6</b>	<b>+13</b>	<b>+0.0</b>	<b>-0.2</b>	<b>-0.4</b>	<b>+0.1</b>	<b>+0.2</b>
53	57	43	60	60	55	52

GENETIC PROFILE	Leptin	C/T
	Poll / Horn	PcPc
	Coat	ED/ED
	Myostatin	Carrier

**COMMENTS:** Look at the body barrel and conformation of Stellar. Great asset brood cow for any stud. Weight: 584kgs RWB: MAU R234

Purchaser ..... Price .....

LOT 8

# KORAKO SALLY

POLLED

Born: 07/08/2021 • ID: KOR S40 • Tag No: S40



P.A.R. CASANOVA 55C (P) (Speckled)

PAR ACE IN A HOLE 66A (Speckled)  
POPPY OF P.A.R. 55P (Leopard)

**SIRE: MX EL GUAPO 103E (P) (Speckled)**

P.A.R. HIGH MAINTENANCE OF MX  
103Z (P) (Speckled)

P.A.R. THROTTLE 66T (P) (Speckled)  
SPECIAL DESIGN OF P.A.R. 20S (P) (Speckled)

SPKNZ EXTREME E27 (ET) (P)  
(White)

PRAIRIE HILL JOHN WAYNE 50S (P) (Speckled)  
CODIAK NICE LADY RKW 25N (Leopard)

**DAM: KORAKO NESS (AI) (ET) (P) (Leopard)**

MAUNGAHINA H61 (AI) (ET) (P)  
(White)

SPOTS 'N SPROUTS STANDS ALONE (P) (White)  
NORTHERN LIGHTS 14N (White)

**MARCH 2025 SPECKLE PARK SINGLE-STEP BREEDPLAN**

GL	BW	Milk	200	400	600	MCW
-1.2	+1.0	+5	+18	+26	+34	+38
50	74	43	70	69	69	57

SS	CWT	EMA	Rib	Rump	RBV	IMF
-0.2	+23	+0.8	+1.0	+1.3	-0.5	+0.3
58	59	45	62	62	58	54

GENETIC PROFILE	Leptin	C/T
	Poll / Horn	PcPc
	Coat	ED/ED
	Myostatin	Non Carrier (Free)

**COMMENTS:** Sally has strength, features in the top 35% EBV for 200, 400, 600 day weight but also has a below average birthweight. Weight: 614kgs RWB: S133

Purchaser ..... Price .....

LOT 9

# KORAKO SNOWDROP

POLLED

Born: 07/08/2021 • ID: KOR S2 • Tag No: S2



P.A.R. CASANOVA 55C (P) (Speckled)

PAR ACE IN A HOLE 66A (Speckled)  
POPPY OF P.A.R. 55P (Leopard)

**SIRE: MX EL GUAPO 103E (P) (Speckled)**

P.A.R. HIGH MAINTENANCE OF MX  
103Z (P) (Speckled)

P.A.R. THROTTLE 66T (P) (Speckled)  
SPECIAL DESIGN OF P.A.R. 20S (P) (Speckled)

MAUNGAHINA LEGACY (AI) (ET)  
(Leopard)

SPOTS 'N SPROUTS STANDS ALONE (P) (White)  
SPKNZ SPN H2O (ET) (P) (Speckled)

**DAM: KORAKO PADDLES (AI) (ET) (P) (White)**

MAINSTREAM E04 (ET) (P)  
(Speckled)

HWY. 4 SPECKLE PARK 2H (Speckled)  
NOTTA PHO-FINISH 54P (Speckled)

**MARCH 2025 SPECKLE PARK SINGLE-STEP BREEDPLAN**

GL	BW	Milk	200	400	600	MCW
<b>+0.5</b>	<b>+5.3</b>	<b>+6</b>	<b>+36</b>	<b>+51</b>	<b>+69</b>	<b>+72</b>
50	72	41	69	68	69	57

SS	CWT	EMA	Rib	Rump	RYB	IMF
<b>+0.8</b>	<b>+41</b>	<b>+1.8</b>	<b>-1.5</b>	<b>-2.1</b>	<b>+1.9</b>	<b>-0.8</b>
59	58	45	62	61	57	54

GENETIC PROFILE	Leptin	C/C
	Poll / Horn	PcPc
	Coat	ED/ED
	Myostatin	Carrier

**COMMENTS:** Lovely top line and length with Snowdrop. In the top 1% 200, 400, 600 EBV weights. Her sire EL GUAPO does this. Weight: 634kgs RWB: MAU R234

Purchaser ..... Price .....



LOT 10

# KORAKO SHEILA

POLLED

Born: 19/09/2021 • ID: KOR S69 • Tag No: S69



SPKNZ GRAND SLAM (AI) (ET) (P)  
(Leopard)

RIVER HILL TRAFFIC JAM 26T (P) (Speckled)  
UPTO SPECS TEEKA 8T (P) (Leopard)

**SIRE: PREMIER G2 CHEROKEE N42 (AI) (ET) (P) (Speckled)**

PREMIER F20 CINDER L7 (AI) (ET)  
(Speckled)

SPKNZ FALCON (AI) (ET) (P) (Speckled)  
SPN H1 (AI) (ET) (P) (White)

MAINSTREAM ELDORADO E11 (ET)  
(P) (White)

HWY. 4 SPECKLE PARK 2H (Speckled)  
SPOTS 'N SPROUTS 3K (Speckled)

**DAM: KORAKO MINNIE (AI) (ET) (P) (White)**

MAUNGAHINA J36 (P) (Speckled)

SPKNZ EXTREME E27 (ET) (P) (White)  
SPKNZ E42 (ET) (P) (Speckled)

**MARCH 2025 SPECKLE PARK SINGLE-STEP BREEDPLAN**

GL	BW	Milk	200	400	600	MCW
<b>-0.6</b>	<b>+1.3</b>	<b>+11</b>	<b>+16</b>	<b>+30</b>	<b>+36</b>	<b>+30</b>
48	72	50	69	67	68	55

SS	CWT	EMA	Rib	Rump	RYB	IMF
<b>+0.1</b>	<b>+26</b>	<b>+1.4</b>	<b>-0.3</b>	<b>-0.6</b>	<b>+0.5</b>	<b>+0.6</b>
53	57	43	60	60	55	52

GENETIC PROFILE	Leptin	C/C
	Poll / Horn	PcPc
	Coat	ED/ED
	Myostatin	Carrier

**COMMENTS:** Sheila is out of MINNIE (KOR M3), a cow who has left many great calves including two herd sires. She is in the top 10% IMF. VIC to Saul. Lots of good bloodlines here. Weight: 584kgs RWB: KOR S133

Purchaser ..... Price .....

**LOT 11****KORAKO SPARKLES****POLLED****Born:** 17/08/2021 • **ID:** KOR S52 • **Tag No:** S52

SPKNZ EDUARDO E31 (ET) (P)  
(Speckled)

RIVER HILL TRAFFIC JAM 26T (P) (Speckled)  
PRAIRIE HILL 65M (Speckled)

**SIRE: KORAKO PRINCE (AI) (ET) (P) (Speckled)**

SPKNZ E34 (ET) (P) (White)

PRAIRIE HILL JOHN WAYNE 50S (P) (Speckled)  
CODIAK NICE LADY RKW 25N (Leopard)

MAUNGAHINA LEGACY (AI) (ET)  
(Leopard)

SPOTS 'N SPROUTS STANDS ALONE (P) (White)  
SPKNZ SPN H20 (ET) (P) (Speckled)

**DAM: KORAKO PLUM (AI) (ET) (P) (White)**

MAINSTREAM E04 (ET) (P)  
(Speckled)

HWY. 4 SPECKLE PARK 2H (Speckled)  
NOTTA PHO-FINISH 54P (Speckled)

**MARCH 2025 SPECKLE PARK SINGLE-STEP BREEDPLAN**

GL	BW	Milk	200	400	600	MCW
<b>-0.2</b>	<b>+4.3</b>	<b>+7</b>	<b>+31</b>	<b>+44</b>	<b>+59</b>	<b>+65</b>
49	72	50	70	69	69	57

SS	CWT	EMA	Rib	Rump	RBV	IMF
<b>+1.3</b>	<b>+34</b>	<b>+1.2</b>	<b>-0.9</b>	<b>-1.4</b>	<b>+1.2</b>	<b>-0.3</b>
60	59	47	62	62	57	53

<b>GENETIC PROFILE</b>	Leptin	<b>C/C</b>
	Poll / Horn	<b>PcPc</b>
	Coat	<b>ED/e</b>
	Myostatin	<b>Non Carrier (Free)</b>

**COMMENTS:** Another very nice Speckle Park cow. Sparkles features in the top 5% EBV for 200, 400, 600 day weights. Please note Sparkles was RWB KOR S121 until 1 Nov then RWB KOR S101. KOR 121 was injured and removed from service. Weight: 612kgs RWB: KOR S121 then KOR S101

Purchaser ..... Price .....

LOT 12

# KORAKO ROWENA

POLLED

Born: 31/07/2020 • ID: KOR R115 • Tag No: R115



UPTO SPECS ULYSSES 25U (P)  
(Speckled)

RAVEN MEADOWS MAGNUM 10N (Speckled)  
PRAIRIE HILL REBA 154F (Speckled)

**SIRE: ANDCHRIS EXTREME 23E (AI) (P) (Leopard)**

SECOND CHANCE ZOEY 3Z  
(Leopard)

SPOTS 'N SPROUTS UNO 102U (P) (Speckled)  
TIA-ROSE OF SARA LEE 3T (P) (Speckled)

SPKNZ EXTREME E27 (ET) (P)  
(White)

PRAIRIE HILL JOHN WAYNE 50S (P) (Speckled)  
CODIAK NICE LADY RKW 25N (Leopard)

**DAM: KORAKO NIKI (AI) (ET) (P) (White)**

MAUNGAHINA H61 (AI) (ET) (P)  
(White)

SPOTS 'N SPROUTS STANDS ALONE (P) (White)  
NORTHERN LIGHTS 14N (White)

**MARCH 2025 SPECKLE PARK SINGLE-STEP BREEDPLAN**

GL	BW	Milk	200	400	600	MCW
-0.4	+5.3	+3	+40	+59	+78	+88
54	70	49	66	63	63	52

SS	CWT	EMA	Rib	Rump	RBV	IMF
+1.2	+43	+0.5	+0.6	+0.7	-0.4	+0.4
57	52	43	53	52	48	48

GENETIC PROFILE	Leptin	C/T
	Poll / Horn	PcPc
	Coat	ED/ED
	Myostatin	Non Carrier (Free)

**COMMENTS:** Rowena is an AI bred cow by ANDCHRIS EXTREME 23E. Top bloodlines again shows through in the quality of this cow. 688kgs and doesn't look gross says it all. Weight: 688kgs RWB: MAU R234

Purchaser ..... Price .....

LOT 13

# KORAKO ROSE

POLLED

Born: 31/08/2020 • ID: KOR R118 • Tag No: R118



SPKNZ GRAND SLAM (AI) (ET) (P)  
(Leopard)

RIVER HILL TRAFFIC JAM 26T (P) (Speckled)  
UPTO SPECS TEEKA 8T (P) (Leopard)

**SIRE: PREMIER G2 CHEROKEE N42 (AI) (ET) (P) (Speckled)**

PREMIER F20 CINDER L7 (AI) (ET)  
(Speckled)

SPKNZ FALCON (AI) (ET) (P) (Speckled)  
SPN H1 (AI) (ET) (P) (White)

SPKNZ EXTREME E27 (ET) (P)  
(White)

PRAIRIE HILL JOHN WAYNE 50S (P) (Speckled)  
CODIAK NICE LADY RKW 25N (Leopard)

**DAM: KORAKO NADINE (AI) (ET) (P) (Leopard)**

MAUNGAHINA H61 (AI) (ET) (P)  
(White)

SPOTS 'N SPROUTS STANDS ALONE (P) (White)  
NORTHERN LIGHTS 14N (White)

**MARCH 2025 SPECKLE PARK SINGLE-STEP BREEDPLAN**

GL	BW	Milk	200	400	600	MCW
-0.2	+0.1	+6	+6	+13	+19	+13
50	73	56	69	67	65	51

SS	CWT	EMA	Rib	Rump	RBV	IMF
+0.3	+13	+0.6	-0.5	-0.8	+0.6	+0.0
53	55	42	54	53	49	48

GENETIC PROFILE	Leptin	C/T
	Poll / Horn	PcPc
	Coat	ED/ED
	Myostatin	Carrier

**COMMENTS:** Rose has the temperament of her sire PMR Cherokee. A cow that just gets on with the job of rearing a calf with no fuss. Weight 548 kgs RWB MAU R234

Purchaser ..... Price .....

LOT 14

# KORAKO QUINCE Q36

POLLED

Born: 16/08/2019 • ID: KOR Q36 • Tag No: Q36



SPKNZ GRAND SLAM (AI) (ET) (P)  
(Leopard)

RIVER HILL TRAFFIC JAM 26T (P) (Speckled)  
UPTO SPECS TEEKA 8T (P) (Leopard)

**SIRE: PREMIER G2 CHEROKEE N42 (AI) (ET) (P) (Speckled)**

PREMIER F20 CINDER L7 (AI) (ET)  
(Speckled)

SPKNZ FALCON (AI) (ET) (P) (Speckled)  
SPN H1 (AI) (ET) (P) (White)

SPOTS 'N SPROUTS STANDS ALONE  
(P) (White)

STYALS LIGHTNING LADD 14P (P) (Speckled)  
SPOTS 'N SPROUTS 2R (P) (Speckled)

**DAM: KORAKO MAGGIE (AI) (ET) (P) (White)**

MAUNGAHINA J37 (P) (Speckled)

MAINSTREAM ELDORADO E11 (ET) (P) (White)  
SPKNZ E36 (ET) (P) (Speckled)

**MARCH 2025 SPECKLE PARK SINGLE-STEP BREEDPLAN**

GL	BW	Milk	200	400	600	MCW
<b>+0.0</b>	<b>+1.3</b>	<b>+8</b>	<b>+12</b>	<b>+23</b>	<b>+31</b>	<b>+28</b>
48	68	49	65	62	60	48

SS	CWT	EMA	Rib	Rump	RBV	IMF
<b>+1.1</b>	<b>+19</b>	<b>+0.7</b>	<b>-0.8</b>	<b>-1.2</b>	<b>+0.7</b>	<b>+0.1</b>
51	50	39	48	47	44	43

GENETIC PROFILE	Leptin	
	Poll / Horn	<b>PcPc</b>
	Coat	<b>ED/ED</b>
	Myostatin	<b>Non Carrier (Free)</b>

**COMMENTS:** Looks are deceiving. Quince is 630kgs and her big frame carries that weight nicely. RWB MAU R234 an outcross sire with MAU N240 on the dam side. Weight: 630kgs  
RWB: MAU R234

Purchaser ..... Price .....

LOT 15

# KORAKO PEGGY

POLLED

Born: 23/11/2018 • ID: KOR P43 • Tag No: P43



SPKNZ FALCON (AI) (ET) (P)  
(Speckled)

A & W 15R (P) (Leopard)  
CODIAK TERESSA GNK 12T (P) (Speckled)

**SIRE: MAUNGAHINA KIDMANS COVE (P) (Leopard)**

MAINSTREAM E12 (ET) (P) (Speckled)

HWY. 4 SPECKLE PARK 2H (Speckled)  
NOTTA PHO-FINISH 54P (Speckled)

SPOTS 'N SPROUTS STANDS ALONE  
(P) (White)

STYALS LIGHTNING LADD 14P (P) (Speckled)  
SPOTS 'N SPROUTS 2R (P) (Speckled)

**DAM: MAUNGAHINA H62 (AI) (ET) (P) (White)**

NORTHERN LIGHTS 14N (White)

FLATLAKE BUZZ 60K (Speckled)  
CODIAK KLIPSO RKW 31K (Leopard)

**MARCH 2025 SPECKLE PARK SINGLE-STEP BREEDPLAN**

GL	BW	Milk	200	400	600	MCW
<b>+1.5</b>	<b>+2.3</b>	<b>+7</b>	<b>+16</b>	<b>+23</b>	<b>+38</b>	<b>+41</b>
59	73	62	70	68	68	58

SS	CWT	EMA	Rib	Rump	RBV	IMF
<b>+0.2</b>	<b>+20</b>	<b>-0.1</b>	<b>+0.0</b>	<b>+0.0</b>	<b>-0.5</b>	<b>+0.8</b>
64	59	50	58	57	55	53

GENETIC PROFILE	Leptin	
	Poll / Horn	<b>PcPc</b>
	Coat	<b>ED/ED</b>
	Myostatin	<b>Non Carrier (Free)</b>

**COMMENTS:** Peggy is by KIDMANS COVE a legend sire. She is in the top 10% EBV for IMF. That's a great trait to have. Weight: 576kgs RWB: MAU R234

Purchaser ..... Price .....

LOT 16

# KORAKO QUEENIE Q42

POLLED

Born: 15/09/2019 • ID: KOR Q42 • Tag No: Q42



SPKNZ GRAND SLAM (AI) (ET) (P)  
(Leopard)

RIVER HILL TRAFFIC JAM 26T (P) (Speckled)  
UPTO SPECS TEEKA 8T (P) (Leopard)

**SIRE: PREMIER G2 CHEROKEE N42 (AI) (ET) (P) (Speckled)**

PREMIER F20 CINDER L7 (AI) (ET)  
(Speckled)

SPKNZ FALCON (AI) (ET) (P) (Speckled)  
SPN H1 (AI) (ET) (P) (White)

MAINSTREAM ELDORADO E11 (ET)  
(P) (White)

HWY. 4 SPECKLE PARK 2H (Speckled)  
SPOTS 'N SPROUTS 3K (Speckled)

**DAM: KORAKO MINNIE (AI) (ET) (P) (White)**

MAUNGAHINA J36 (P) (Speckled)

SPKNZ EXTREME E27 (ET) (P) (White)  
SPKNZ E42 (ET) (P) (Speckled)

**MARCH 2025 SPECKLE PARK SINGLE-STEP BREEDPLAN**

GL	BW	Milk	200	400	600	MCW
-0.5	+0.5	+9	+11	+21	+24	+18
47	68	50	64	61	60	48

SS	CWT	EMA	Rib	Rump	RBV	IMF
+0.1	+19	+0.7	-0.2	-0.5	+0.3	+0.4
55	51	40	50	50	46	44

GENETIC PROFILE	Leptin	
	Poll / Horn	<b>PcPc</b>
	Coat	<b>ED/ED</b>
	Myostatin	<b>Carrier</b>

**COMMENTS:** Queenie is a queen. Out of one of the stars of the herd MINNIE (KOR M3). BW top 24% and 0.4 IMF top 25%. Oozing quality all the way. Weight: 598kgs RWB MAU R234

Purchaser ..... Price .....

LOT 17

# KORAKO PEA

POLLED

Born: 19/11/2018 • ID: KOR P25 • Tag No: P25



SPKNZ GRAND SLAM (AI) (ET) (P)  
(Leopard)

**SIRE: MAUNGAHINA LORD STARS (White)**

MAINSTREAM E12 (ET) (P) (Speckled)

SPKNZ EXTREME E27 (ET) (P)  
(White)

**DAM: SPKNZ SPN H36 (ET) (P) (Speckled)**

SPKNZ E42 (ET) (P) (Speckled)

RIVER HILL TRAFFIC JAM 26T (P) (Speckled)  
UPTO SPECS TEEKA 8T (P) (Leopard)

HWY. 4 SPECKLE PARK 2H (Speckled)  
NOTTA PHO-FINISH 54P (Speckled)

PRAIRIE HILL JOHN WAYNE 50S (P) (Speckled)  
CODIAK NICE LADY RKW 25N (Leopard)

RIVER HILL TRAFFIC JAM 26T (P) (Speckled)  
PRAIRIE HILL 65M (Speckled)

**MARCH 2025 SPECKLE PARK SINGLE-STEP BREEDPLAN**

GL	BW	Milk	200	400	600	MCW
-0.1	+0.7	+9	+11	+12	+16	+8
52	73	62	69	67	65	52

SS	CWT	EMA	Rib	Rump	RBV	IMF
+0.5	+10	+0.4	+0.3	+0.3	-0.3	+0.5
55	56	43	54	53	50	48

<b>GENETIC PROFILE</b>	Leptin	
	Poll / Horn	<b>PcPc</b>
	Coat	<b>ED/ED</b>
	Myostatin	<b>Non Carrier (Free)</b>

**COMMENTS:** Pea is one of the few by MAU LORD STARS I have. Powerful back end, that's where the meat is. One of a group of embryo cows from 2018. Weight: 614kgs RWB: MAU R234

Purchaser ..... Price .....



LOT 18

# KORAKO PANDORA

POLLED

Born: 18/11/2018 • ID: KOR P24 • Tag No: P24



RIVER HILL TRAFFIC JAM 26T (P)  
(Speckled)

A & W JOEY 55P (Speckled)  
CALAMASUE 26R (P) (Speckled)

**SIRE: SPKNZ EDUARDO E31 (ET) (P) (Speckled)**

PRAIRIE HILL 65M (Speckled)

PRAIRIE HILL MOST WANTED 15K (Speckled)  
PRAIRIE HILL DREAMAKER 88K (Speckled)

MAINSTREAM ELDORADO E11 (ET)  
(P) (White)

HWY. 4 SPECKLE PARK 2H (Speckled)  
SPOTS 'N SPROUTS 3K (Speckled)

**DAM: SPKNZ H2 (P) (White)**

SPKNZ E36 (ET) (P) (Speckled)

PRAIRIE HILL JOHN WAYNE 50S (P) (Speckled)  
CODIAK PRAIRIE FIRE RKW 05J (Speckled)

**MARCH 2025 SPECKLE PARK SINGLE-STEP BREEDPLAN**

GL	BW	Milk	200	400	600	MCW
<b>-0.8</b>	<b>+2.4</b>	<b>+8</b>	<b>+20</b>	<b>+36</b>	<b>+46</b>	<b>+46</b>
56	74	64	71	68	67	58

SS	CWT	EMA	Rib	Rump	RBV	IMF
<b>+0.8</b>	<b>+28</b>	<b>+1.7</b>	<b>+0.1</b>	<b>+0.0</b>	<b>+0.3</b>	<b>+0.4</b>
59	59	48	57	57	54	52

<b>GENETIC PROFILE</b>	Leptin	
	Poll / Horn	<b>HPc</b>
	Coat	<b>ED/ED</b>
	Myostatin	<b>Carrier</b>

**COMMENTS:** Front paddock cow with those Speckle spots. Has two great background sires, RVER HILL TRAFFUC JAM and ELDORADO to produce EDUARDO. Pandora is in top 10% for milk. Weight: 648kg RWB; MAU R234

Purchaser ..... Price .....

LOT 19

# KORAKO PIPPA

POLLED

Born: 21/11/2018 • ID: KOR P35 • Tag No: P35



SPOTS 'N SPROUTS STANDS ALONE (P) (White)

STYALS LIGHTNING LADD 14P (P) (Speckled)  
SPOTS 'N SPROUTS 2R (P) (Speckled)

**SIRE: MAUNGAHINA LEGACY (AI) (ET) (Leopard)**

SPKNZ SPN H20 (ET) (P) (Speckled)

SPKNZ EXTREME E27 (ET) (P) (White)  
SPKNZ E3 (ET) (P) (White)

HWY. 4 SPECKLE PARK 2H (Speckled)

PARKLAND SPECKLE PARKS 5B  
LEIGH-AL-ANN PRINCESS 1B

**DAM: MAINSTREAM E04 (ET) (P) (Speckled)**

NOTTA PHO-FINISH 54P (Speckled)

STAR BANK LACERTA 68L (Speckled)  
STAR BANK LEONID NIGHT 54L (Speckled)

**MARCH 2025 SPECKLE PARK SINGLE-STEP BREEDPLAN**

GL	BW	Milk	200	400	600	MCW
<b>-0.7</b>	<b>+2.0</b>	<b>+8</b>	<b>+22</b>	<b>+31</b>	<b>+38</b>	<b>+37</b>
59	75	62	73	71	71	61

SS	CWT	EMA	Rib	Rump	RBY	IMF
<b>+0.4</b>	<b>+24</b>	<b>+0.5</b>	<b>-0.1</b>	<b>-0.2</b>	<b>+0.2</b>	<b>-0.2</b>
65	62	53	62	62	59	58

<b>GENETIC PROFILE</b>	Leptin	
	Poll / Horn	<b>PcPc</b>
	Coat	<b>ED/e</b>
	Myostatin	<b>Carrier</b>

**COMMENTS:** Another embryo P cow, Pippa, this time by LEGACY rated by his breeder as one of the best he has bred. Pippa has good figures at all weight EBVs. Weight: 630kgs RWB: MAU R234

Purchaser ..... Price .....

LOT 20

# KORAKO PAMMY

POLLED

Born: 28/11/2018 • ID: KOR P46 • Tag No: P46



SPKNZ FALCON (AI) (ET) (P)  
(Speckled)

A & W 15R (P) (Leopard)  
CODIAK TERESSA GNK 12T (P) (Speckled)

**SIRE: MAUNGAHINA KIDMANS COVE (P) (Leopard)**

MAINSTREAM E12 (ET) (P) (Speckled)

HWY. 4 SPECKLE PARK 2H (Speckled)  
NOTTA PHO-FINISH 54P (Speckled)

SPOTS 'N SPROUTS STANDS ALONE  
(P) (White)

STYALS LIGHTNING LADD 14P (P) (Speckled)  
SPOTS 'N SPROUTS 2R (P) (Speckled)

**DAM: MAUNGAHINA H62 (AI) (ET) (P) (White)**

NORTHERN LIGHTS 14N (White)

FLATLAKE BUZZ 60K (Speckled)  
CODIAK KLIPSO RKW 31K (Leopard)

**MARCH 2025 SPECKLE PARK SINGLE-STEP BREEDPLAN**

GL	BW	Milk	200	400	600	MCW
<b>+1.0</b>	<b>+1.7</b>	<b>+7</b>	<b>+13</b>	<b>+17</b>	<b>+29</b>	<b>+30</b>
58	74	62	71	68	67	57

SS	CWT	EMA	Rib	Rump	RBV	IMF
<b>+0.5</b>	<b>+15</b>	<b>+0.0</b>	<b>+0.4</b>	<b>+0.5</b>	<b>-0.7</b>	<b>+0.8</b>
61	58	49	57	56	53	52

<b>GENETIC PROFILE</b>	Leptin	
	Poll / Horn	<b>HPc</b>
	Coat	<b>ED/ED</b>
	Myostatin	<b>Non Carrier (Free)</b>

**COMMENTS:** Another great P embryo bred cow by Kidmans Cove. Pammy is in the top 5% for IMF . Her sire seems to pass that trait on. Weight 636 kgs RWB MAU R234

Purchaser ..... Price .....

LOT 21

# KORAKO PRANCER

POLLED

Born: 21/11/2018 • ID: KOR P31 • Tag No: P31



SPOTS 'N SPROUTS STANDS ALONE (P) (White)

STYALS LIGHTNING LADD 14P (P) (Speckled)  
SPOTS 'N SPROUTS 2R (P) (Speckled)

**SIRE: MAUNGAHINA LEGACY (AI) (ET) (Leopard)**

SPKNZ SPN H20 (ET) (P) (Speckled)

SPKNZ EXTREME E27 (ET) (P) (White)  
SPKNZ E3 (ET) (P) (White)

HWY. 4 SPECKLE PARK 2H (Speckled)

PARKLAND SPECKLE PARKS 5B  
LEIGH-AL-ANN PRINCESS 1B

**DAM: MAINSTREAM E04 (ET) (P) (Speckled)**

NOTTA PHO-FINISH 54P (Speckled)

STAR BANK LACERTA 68L (Speckled)  
STAR BANK LEONID NIGHT 54L (Speckled)

**MARCH 2025 SPECKLE PARK SINGLE-STEP BREEDPLAN**

GL	BW	Milk	200	400	600	MCW
<b>-0.5</b>	<b>+2.4</b>	<b>+7</b>	<b>+23</b>	<b>+33</b>	<b>+42</b>	<b>+44</b>
61	74	63	73	71	70	61

SS	CWT	EMA	Rib	Rump	RBY	IMF
<b>-0.1</b>	<b>+26</b>	<b>+0.1</b>	<b>-0.9</b>	<b>-1.2</b>	<b>+0.8</b>	<b>-0.6</b>
68	63	54	62	61	59	57

<b>GENETIC PROFILE</b>	Leptin	
	Poll / Horn	<b>PcPc</b>
	Coat	<b>ED/e</b>
	Myostatin	<b>Carrier</b>

**COMMENTS:** Strong and long best describes Prancer, by MAU Legacy, not surprising. Up in the top 20% for 200,400day weights. Weight 660 kgs RWB MAU R234

Purchaser ..... Price .....

LOT 22

# KORAKO PETALS

POLLED

Born: 17/11/2018 • ID: KOR P14 • Tag No: P14



SPOTS 'N SPROUTS STANDS ALONE (P) (White)

STYALS LIGHTNING LADD 14P (P) (Speckled)  
SPOTS 'N SPROUTS 2R (P) (Speckled)

**SIRE: MAUNGAHINA LEGACY (AI) (ET) (Leopard)**

SPKNZ SPN H20 (ET) (P) (Speckled)

SPKNZ EXTREME E27 (ET) (P) (White)  
SPKNZ E3 (ET) (P) (White)

HWY. 4 SPECKLE PARK 2H (Speckled)

PARKLAND SPECKLE PARKS 5B  
LEIGH-AL-ANN PRINCESS 1B

**DAM: MAINSTREAM E12 (ET) (P) (Speckled)**

NOTTA PHO-FINISH 54P (Speckled)

STAR BANK LACERTA 68L (Speckled)  
STAR BANK LEONID NIGHT 54L (Speckled)

**MARCH 2025 SPECKLE PARK SINGLE-STEP BREEDPLAN**

GL	BW	Milk	200	400	600	MCW
<b>+0.0</b>	<b>+1.4</b>	<b>+6</b>	<b>+16</b>	<b>+28</b>	<b>+36</b>	<b>+38</b>
61	73	63	72	70	69	61

SS	CWT	EMA	Rib	Rump	RBV	IMF
<b>+0.2</b>	<b>+23</b>	<b>-0.3</b>	<b>-1.0</b>	<b>-1.4</b>	<b>+0.4</b>	<b>-0.2</b>
67	62	53	62	62	59	57

<b>GENETIC PROFILE</b>	Leptin	
	Poll / Horn	<b>PcPc</b>
	Coat	<b>ED/ED</b>
	Myostatin	<b>Non Carrier (Free)</b>

**COMMENTS:** Petals got crook a couple of years ago and vet couldn't pin point why. Has reared another great calf this year no problem. One of the few to run with KOR 101, a great bull I would have liked to used a lot more of. Weight 540 RWB KOR S121 until 1st Nov then KOR S101

Purchaser ..... Price .....

**LOT 23****KORAKO NALA****POLLED**

Born: 13/07/2017 • ID: KOR N23 • Tag No: N23

PRAIRIE HILL JOHN WAYNE 50S (P)  
(Speckled)PRAIRIE HILL DURMAX 93N (Black)  
PRAIRIE HILL NABOB 50N (Speckled)**SIRE: SPKNZ EXTREME E27 (ET) (P) (White)**CODIAK NICE LADY RKW 25N  
(Leopard)HWY. 4 SPECKLE PARK 2H (Speckled)  
CODIAK PRAIRIE FIRE RKW 01J (Speckled)SPOTS 'N SPROUTS STANDS ALONE  
(P) (White)STYALS LIGHTNING LADD 14P (P) (Speckled)  
SPOTS 'N SPROUTS 2R (P) (Speckled)**DAM: MAUNGAHINA H61 (AI) (ET) (P) (White)**

NORTHERN LIGHTS 14N (White)

FLATLAKE BUZZ 60K (Speckled)  
CODIAK KLIPSO RKW 31K (Leopard)**MARCH 2025 SPECKLE PARK SINGLE-STEP BREEDPLAN**

GL	BW	Milk	200	400	600	MCW
<b>-1.9</b>	<b>+1.7</b>	<b>+8</b>	<b>+26</b>	<b>+41</b>	<b>+52</b>	<b>+53</b>
57	78	66	72	69	69	59

SS	CWT	EMA	Rib	Rump	RBV	IMF
<b>+0.5</b>	<b>+34</b>	<b>+0.0</b>	<b>-1.6</b>	<b>-2.3</b>	<b>+1.0</b>	<b>-0.3</b>
63	60	50	59	58	55	53

**GENETIC PROFILE**

Leptin	
Poll / Horn	
Coat	
Myostatin	

**COMMENTS:** Nala is the first of the N embryo bred cows. Weighing in at 696kgs shows the impact the sire EXTREME had. Nala s the top 10% bracket for 200,400, 600 day weights. Weight: 696kgs RWB: MAU R234

Purchaser ..... Price .....

LOT 24

# KORAKO NESS

POLLED

Born: 16/07/2017 • ID: KOR N51 • Tag No: N51



PRAIRIE HILL JOHN WAYNE 50S (P)  
(Speckled)

PRAIRIE HILL DURMAX 93N (Black)  
PRAIRIE HILL NABOB 50N (Speckled)

**SIRE: SPKNZ EXTREME E27 (ET) (P) (White)**

CODIAK NICE LADY RKW 25N  
(Leopard)

HWY. 4 SPECKLE PARK 2H (Speckled)  
CODIAK PRAIRIE FIRE RKW 01J (Speckled)

SPOTS 'N SPROUTS STANDS ALONE  
(P) (White)

STYALS LIGHTNING LADD 14P (P) (Speckled)  
SPOTS 'N SPROUTS 2R (P) (Speckled)

**DAM: MAUNGAHINA H61 (AI) (ET) (P) (White)**

NORTHERN LIGHTS 14N (White)

FLATLAKE BUZZ 60K (Speckled)  
CODIAK KLIPSO RKW 31K (Leopard)

**MARCH 2025 SPECKLE PARK SINGLE-STEP BREEDPLAN**

GL	BW	Milk	200	400	600	MCW
-1.9	+0.5	+7	+19	+29	+38	+40
58	78	66	72	70	69	59

SS	CWT	EMA	Rib	Rump	RBV	IMF
+0.1	+27	+0.1	-0.2	-0.3	+0.2	+0.1
59	61	51	61	61	58	56

<b>GENETIC PROFILE</b>	Leptin	
	Poll / Horn	
	Coat	
	Myostatin	

**COMMENTS:** Ness is what we are looking for. Top 20% 400 & 600 day weights but also in the top 5% for Low BW and Gestation length. Weight: 640kgs RWB: MAU R234

Purchaser ..... Price .....

LOT 25

# KORAKO MOTTS

POLLED

Born: 23/07/2016 • ID: KOR M17 • Tag No: M17



STYALS LIGHTNING LADD 14P (P)  
(Speckled)

HWY.4 SPECKLE PARK 20K (Speckled)  
LIGHTNING LADY 10C (Speckled)

**SIRE: SPOTS 'N SPROUTS STANDS ALONE (P) (White)**

SPOTS 'N SPROUTS 2R (P)  
(Speckled)

STAR BANK LACERTA 68L (Speckled)  
SPOTS 'N SPROUTS 21L (Speckled)

MAINSTREAM ELDORADO E11 (ET)  
(P) (White)

HWY. 4 SPECKLE PARK 2H (Speckled)  
SPOTS 'N SPROUTS 3K (Speckled)

**DAM: MAUNGAHINA J37 (P) (Speckled)**

SPKNZ E36 (ET) (P) (Speckled)

PRAIRIE HILL JOHN WAYNE 50S (P) (Speckled)  
CODIAK PRAIRIE FIRE RKW 05J (Speckled)

**MARCH 2025 SPECKLE PARK SINGLE-STEP BREEDPLAN**

GL	BW	Milk	200	400	600	MCW
<b>+0.0</b>	<b>+3.0</b>	<b>+5</b>	<b>+22</b>	<b>+36</b>	<b>+46</b>	<b>+51</b>
60	79	66	74	71	71	62

SS	CWT	EMA	Rib	Rump	RBY	IMF
<b>+0.8</b>	<b>+26</b>	<b>+0.7</b>	<b>-0.3</b>	<b>-0.5</b>	<b>+0.3</b>	<b>+0.1</b>
66	63	54	62	61	59	58

<b>GENETIC PROFILE</b>	Leptin	
	Poll / Horn	
	Coat	
	Myostatin	

**COMMENTS:** Motts is one of the true matriarchs of the herd, quiet with very good calves, I hope she goes to a good home, she deserves it. Weight: 654kgs RWB: MAU R234

Purchaser ..... Price .....



LOT 26

# KORAKO MINNIE

POLLED

Born: 21/07/2016 • ID: KOR M3 • Tag No: M3



HWY. 4 SPECKLE PARK 2H  
(Speckled)

PARKLAND SPECKLE PARKS 5B  
LEIGH-AL-ANN PRINCESS 1B

**SIRE: MAINSTREAM ELDORADO E11 (ET) (P) (White)**

SPOTS 'N SPROUTS 3K (Speckled)

ASPEN ACRES FREEDOM 31F (Speckled)  
SPOTS 'N SPROUTS 6F (Black)

SPKNZ EXTREME E27 (ET) (P)  
(White)

PRAIRIE HILL JOHN WAYNE 50S (P) (Speckled)  
CODIAK NICE LADY RKW 25N (Leopard)

**DAM: MAUNGAHINA J36 (P) (Speckled)**

SPKNZ E42 (ET) (P) (Speckled)

RIVER HILL TRAFFIC JAM 26T (P) (Speckled)  
PRAIRIE HILL 65M (Speckled)

**MARCH 2025 SPECKLE PARK SINGLE-STEP BREEDPLAN**

GL	BW	Milk	200	400	600	MCW
<b>-2.2</b>	<b>+0.0</b>	<b>+10</b>	<b>+15</b>	<b>+27</b>	<b>+32</b>	<b>+28</b>
58	78	65	71	69	69	60

SS	CWT	EMA	Rib	Rump	RBV	IMF
<b>-0.2</b>	<b>+24</b>	<b>+0.7</b>	<b>+0.7</b>	<b>+0.8</b>	<b>-0.5</b>	<b>+0.8</b>
59	61	51	61	60	57	55

<b>GENETIC PROFILE</b>	Leptin	
	Poll / Horn	
	Coat	
	Myostatin	

**COMMENTS:** Minnie could be rated number one. Two very good daughters in the herd. Two very good sires PAL and also TRU for the sale. -2.2 for gestation length. 0.0 birthweight. A true Eldorado champion breeding cow all the way. Weight: 588kgs RWB: MAU R234

Purchaser ..... Price .....

Born: 24/07/2016 • ID: KOR M18 • Tag No: M18



STYALS LIGHTNING LADD 14P (P)  
(Speckled)

HWY.4 SPECKLE PARK 20K (Speckled)  
LIGHTNING LADY 10C (Speckled)

**SIRE: SPOTS 'N SPROUTS STANDS ALONE (P) (White)**

SPOTS 'N SPROUTS 2R (P)  
(Speckled)

STAR BANK LACERTA 68L (Speckled)  
SPOTS 'N SPROUTS 21L (Speckled)

MAINSTREAM ELDORADO E11 (ET)  
(P) (White)

HWY. 4 SPECKLE PARK 2H (Speckled)  
SPOTS 'N SPROUTS 3K (Speckled)

**DAM: MAUNGAHINA J37 (P) (Speckled)**

SPKNZ E36 (ET) (P) (Speckled)

PRAIRIE HILL JOHN WAYNE 50S (P) (Speckled)  
CODIAK PRAIRIE FIRE RKW 05J (Speckled)

**MARCH 2025 SPECKLE PARK SINGLE-STEP BREEDPLAN**

GL	BW	Milk	200	400	600	MCW
<b>-0.3</b>	<b>+2.8</b>	<b>+7</b>	<b>+20</b>	<b>+29</b>	<b>+38</b>	<b>+39</b>
60	79	65	73	71	70	62

SS	CWT	EMA	Rib	Rump	RBY	IMF
<b>-0.3</b>	<b>+19</b>	<b>-0.1</b>	<b>+0.0</b>	<b>-0.1</b>	<b>-0.3</b>	<b>+0.2</b>
65	62	54	61	61	58	57

<b>GENETIC PROFILE</b>	Leptin	
	Poll / Horn	
	Coat	
	Myostatin	

**COMMENTS:** Mottles is almost a pet, quiet as they can get in a commercial environment From my 1st lot of embryos she has 3 progeny in the herd. A cow that has got many calving's left in her yet. Weight 648 kgs RWB MAU R234

Purchaser ..... Price .....

LOT 28

# KORAKO MAXINE

POLLED

Born: 25/07/2016 • ID: KOR M26 • Tag No: M26



HWY. 4 SPECKLE PARK 2H  
(Speckled)

PARKLAND SPECKLE PARKS 5B  
LEIGH-AL-ANN PRINCESS 1B

**SIRE: MAINSTREAM ELDORADO E11 (ET) (P) (White)**

SPOTS 'N SPROUTS 3K (Speckled)

ASPEN ACRES FREEDOM 31F (Speckled)  
SPOTS 'N SPROUTS 6F (Black)

SPKNZ EXTREME E27 (ET) (P)  
(White)

PRAIRIE HILL JOHN WAYNE 50S (P) (Speckled)  
CODIAK NICE LADY RKW 25N (Leopard)

**DAM: MAUNGAHINA J36 (P) (Speckled)**

SPKNZ E42 (ET) (P) (Speckled)

RIVER HILL TRAFFIC JAM 26T (P) (Speckled)  
PRAIRIE HILL 65M (Speckled)

**MARCH 2025 SPECKLE PARK SINGLE-STEP BREEDPLAN**

GL	BW	Milk	200	400	600	MCW
<b>-0.9</b>	<b>+1.0</b>	<b>+9</b>	<b>+14</b>	<b>+19</b>	<b>+24</b>	<b>+19</b>
59	79	64	72	70	69	59

SS	CWT	EMA	Rib	Rump	RBY	IMF
<b>-0.5</b>	<b>+14</b>	<b>+0.0</b>	<b>+1.4</b>	<b>+1.8</b>	<b>-1.3</b>	<b>+1.0</b>
60	60	49	58	57	54	53

GENETIC PROFILE	Leptin	
	Poll / Horn	
	Coat	
	Myostatin	

**COMMENTS:** Maxine is a quality cow, great udder and good EBV BW figures. By the great sire Eldorado, Maxine is another cow that just keeps on giving.

Weight 588kgs RWB MAU R234

Purchaser ..... Price .....

LOT 29

# KORAKO TRU

POLLED

Born: 22/08/2022 • ID: KOR T107 • Tag No: T107



SPKNZ GRAND SLAM (AI) (ET) (P)  
(Leopard)

RIVER HILL TRAFFIC JAM 26T (P) (Speckled)  
UPTO SPECS TEEKA 8T (P) (Leopard)

**SIRE: PREMIER G2 CHEROKEE N42 (AI) (ET) (P) (Speckled)**

PREMIER F20 CINDER L7 (AI) (ET)  
(Speckled)

SPKNZ FALCON (AI) (ET) (P) (Speckled)  
SPN H1 (AI) (ET) (P) (White)

MAINSTREAM ELDORADO E11 (ET)  
(P) (White)

HWY. 4 SPECKLE PARK 2H (Speckled)  
SPOTS 'N SPROUTS 3K (Speckled)

**DAM: KORAKO MINNIE (AI) (ET) (P) (White)**

MAUNGAHINA J36 (P) (Speckled)

SPKNZ EXTREME E27 (ET) (P) (White)  
SPKNZ E42 (ET) (P) (Speckled)

**MARCH 2025 SPECKLE PARK SINGLE-STEP BREEDPLAN**

GL	BW	Milk	200	400	600	MCW
-1.3	+0.0	+9	+13	+23	+26	+20
48	73	50	69	67	64	50

SS	CWT	EMA	Rib	Rump	RBV	IMF
+0.5	+21	+0.9	+0.2	+0.1	+0.0	+0.7
53	55	40	51	50	46	46

GENETIC PROFILE	Leptin	C/C
	Poll / Horn	Homozygous Polled (PcPc)
	Coat	Homozygous Dominant Black (ED/ED)
	Myostatin	Non Carrier (Free)

**COMMENTS:** TRU is a true pleasure to have as the last herd sire to sell for Korako. Quiet, very good EBV figures -1.3 for gestation length and 0.0 for birth weight Out of one of the herds best KOR M3 Minnie. Well proven for easy calve.

Purchaser ..... Price .....

LOT 30

22/143



**COMMENTS:** 22/143 F2 556 kgs RWB T107 or T53

LOT 30

22/185



**COMMENTS:** 22/185 F1 568 kgs RWB S133

Purchaser ..... Price .....

LOT 31

22/159



**COMMENTS:** 22/159 F2 554 kgs RWB T107

LOT 31

22/192



**COMMENTS:** 22/192 F1 530 kgs RWB S133

Purchaser ..... Price .....

LOT 32

22/150



**COMMENTS:** 22/150 F1 506 kgs RWB S133

LOT 32

21/236



**COMMENTS:** 21/236 F1 492 kgs RWB T53

Purchaser ..... Price .....

LOT 33

22/120



**COMMENTS:** 22/120 F1 542 kgs RWB S133

LOT 33

21/136



**COMMENTS:** 21/136 F2 564 kgs RWB T53

Purchaser ..... Price .....



LOT 34 21/191



**COMMENTS:** 21/191 F1 622kgs RWB S133

LOT 34 21/222



**COMMENTS:** 21/222 F1 683 kgs RWB T53

Purchaser ..... Price .....

LOT 35

21/134



**COMMENTS:** 21/134 F2 574 kgs RWB T53

LOT 35

21/190



**COMMENTS:** 21/190 F1 574 kgs RWB T107

Purchaser ..... Price .....

LOT 36

21/79



**COMMENTS:** 21/79 F3 588 kgs RWB T53

LOT 36

21/199



**COMMENTS:** 21/199 F1 596 kgs RWB S133

Purchaser ..... Price .....

LOT 37

21/153



**COMMENTS:** 20/153 F2 560 kgs RWB T53

LOT 37

21/160



**COMMENTS:** 21/160 F1 568 kgs RWB T53

Purchaser ..... Price .....

LOT 38

21/161



**COMMENTS:** 21/161 F1 544 kgs RWB S133

LOT 38

21/211



**COMMENTS:** 21/211 F1 630 kgs RWB T107

Purchaser ..... Price .....

LOT 40

20/207



**COMMENTS:** 20/207 F1 618 kgs RWB T53

LOT 40

20/217



**COMMENTS:** 20/207 F1 618 kgs RWB T53

Purchaser ..... Price .....

LOT 39 21/137



COMMENTS: 21/137 F2 506 kgs RWB T107

LOT 39 21/138



COMMENTS: 21/138 F2 478 kgs RWB S133

LOT 39 20/214



COMMENTS: 20/214 F2 521 kgs RWB S133

Purchaser ..... Price .....

LOT 41

18/38



**COMMENTS:** 18/38 F2 568kgs RWB T107

LOT 41

20/218



**COMMENTS:** 20/218 F3 538 kgs RWB T53

Purchaser ..... Price .....



LOT 42

19/59



**COMMENTS:** 19/59 F2 706 kgs RWB T107

LOT 42

19/109



**COMMENTS:** 19/109 F1 622 kgs RWB T53

Purchaser ..... Price .....

LOT 43

18/45



**COMMENTS:** 18/45 F2 642 kgs RWB T53

LOT 43

19/99



**COMMENTS:** 19/99 F1 694 kgs RWB T107

Purchaser ..... Price .....

LOT 44

18/96



**COMMENTS:** 18/96 F1 630 kgs RWB T107

LOT 44

18/111



**COMMENTS:** 18/111 F1 616 kgs RWB T53

Purchaser ..... Price .....

LOT 45

18/93



**COMMENTS:** 18/93 F1 660 kgs RWB T107

LOT 45

18/104



**COMMENTS:** 18/104 F1 596kgs RWB T107

Purchaser ..... Price .....

LOT 46

18/103



**COMMENTS:** 18/103 F1 668 kgs RWB T107

LOT 46

16/148



**COMMENTS:** 16/148 F1 540 kgs RWB T 53

Purchaser ..... Price .....

LOT 47 17/100



**COMMENTS:** 17/100 F1 570 kgs RWB T107

LOT 47 17/112



**COMMENTS:** 17/112 F1 718 kgs RWB T107

Purchaser ..... Price .....

LOT 48

17/76



**COMMENTS:** 17/76 F1 576 kgs RWB T53

LOT 48

17/233



**COMMENTS:** 17/233 F1 624 kgs RWB T53

Purchaser ..... Price .....

LOT 49

16/28



**COMMENTS:** 16/28 F1 620 kgs RWB T53

LOT 49

17/202



**COMMENTS:** 17/202 F1 654 kgs RWB T53

Purchaser ..... Price .....



LOT 50

16/56



**COMMENTS:** 16/56 F1 662 kgs RWB T107

LOT 50

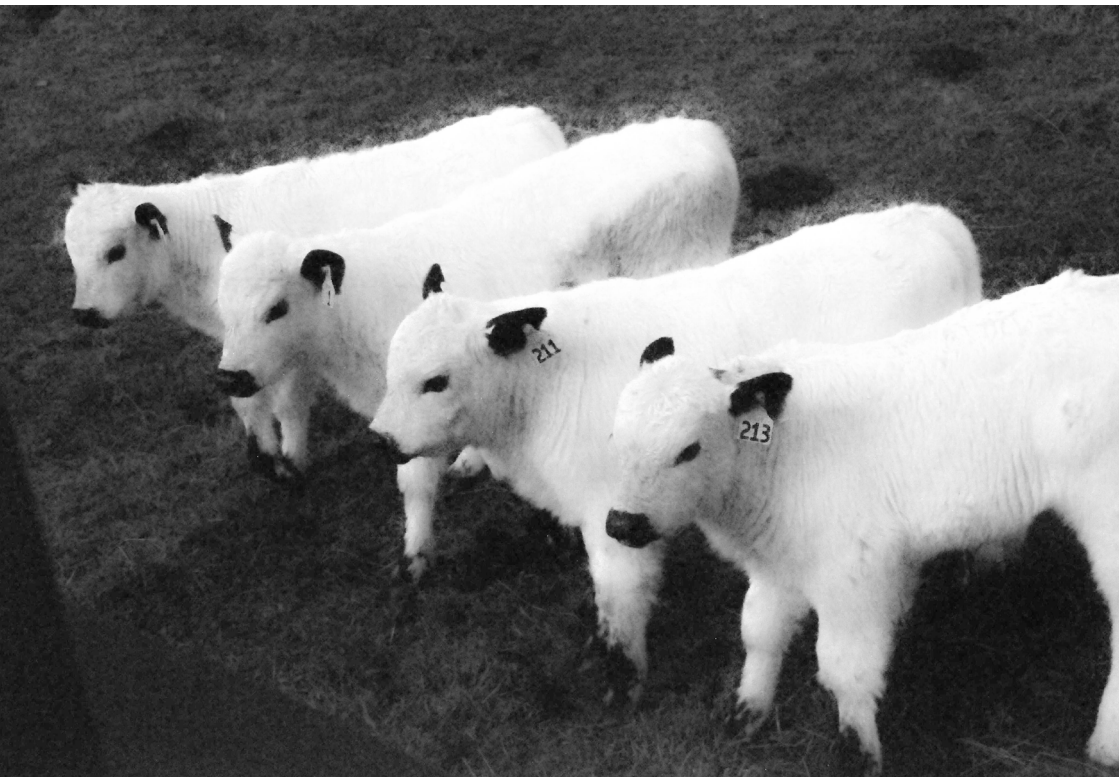
16/84



**COMMENTS:** 16/84 F1 592 kgs RWB T107

Purchaser ..... Price .....

# NOTES



FOR ENQUIRIES, CONTACT:

**BILL FLOWERDAY**  
027 272 4361  
[bilanwen@farmside.co.nz](mailto:bilanwen@farmside.co.nz)

**KORAKOSPECKLEPARK.CO.NZ**

**BILL FLOWERDAY**  
027 272 4361  
bilanwen@farmside.co.nz